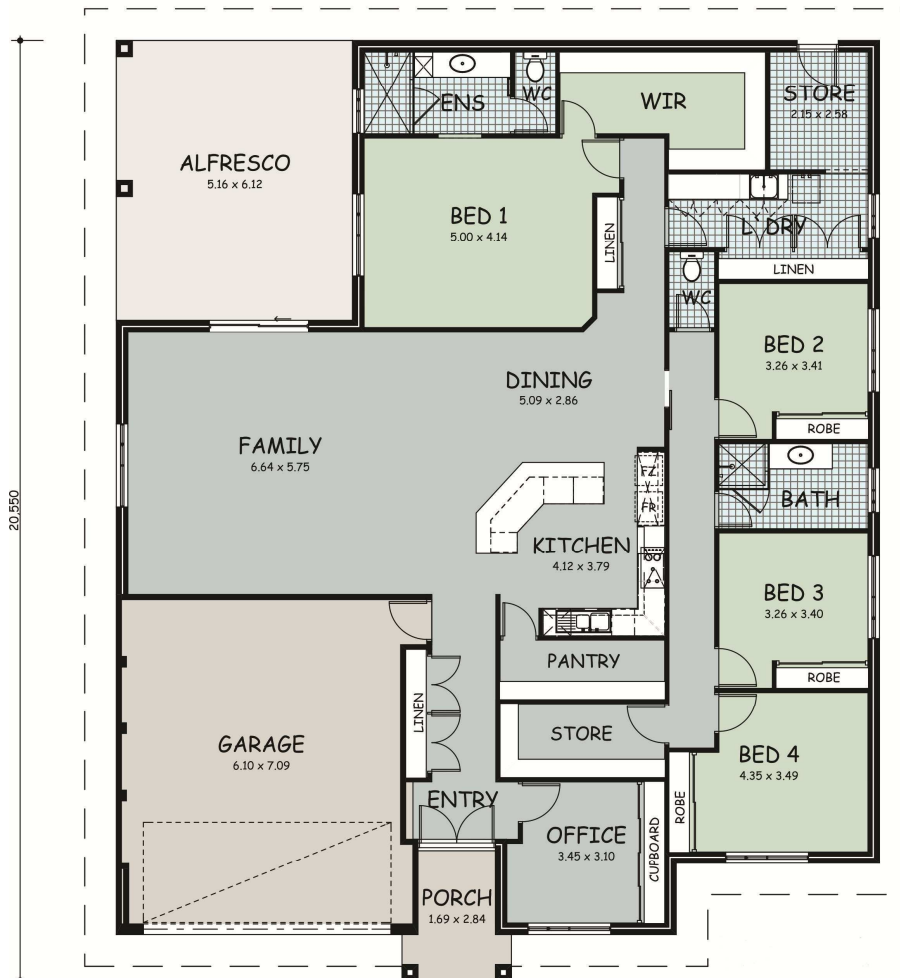


# The '07-2013'



Living: 237.53m<sup>2</sup>  
 Alfresco: 31.58m<sup>2</sup>  
 Garage: 46.75m<sup>2</sup>  
 Porch: 5.50m<sup>2</sup>  
 Entry: 17.58m<sup>2</sup>

Total Area: 321.36m<sup>2</sup>

**TRITON**  
 BUILDING CO  
 PO Box 291  
 GERALDTON WA 6530  
 PH 9921 4661  
[www.tritonbuilding.com.au](http://www.tritonbuilding.com.au)