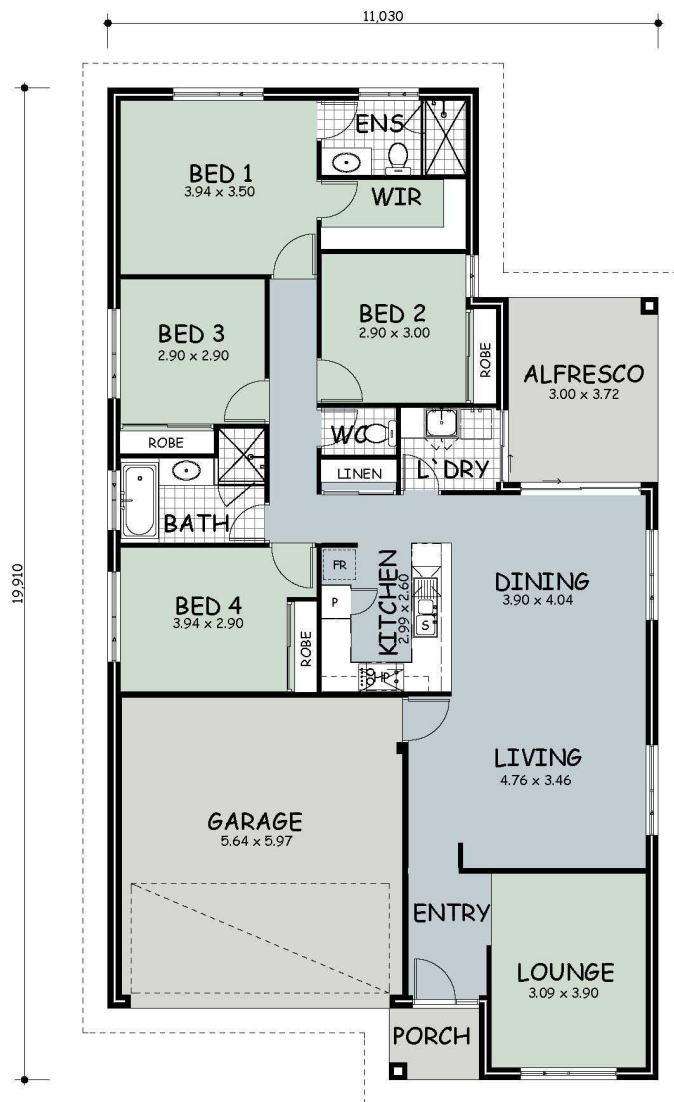


The 'Kalumba'



| | |
|--------------------|----------------------------|
| Living: | 145.74m ² |
| Porch: | 2.59m ² |
| Alfresco: | 11.16m ² |
| Garage: | 36.88m ² |
| Total Area: | 196.37m² |



PO Box 291
 GERALDTON WA 6530
 PH 9921 4661
www.tritonbuilding.com.au