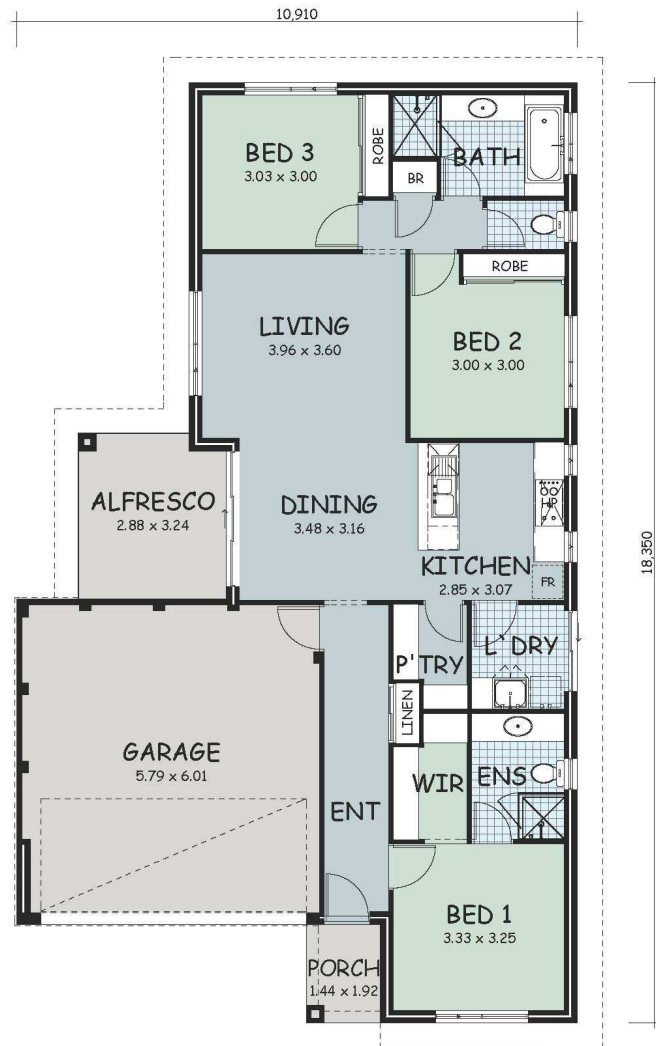


# The 'Abercorn'



Living:	113.39m <sup>2</sup>
Porch:	2.76m <sup>2</sup>
Alfresco:	9.12m <sup>2</sup>
Garage:	37.26m <sup>2</sup>
<b>Total Area:</b>	<b>162.53m<sup>2</sup></b>

**TRITON**  
BUILDING CO  
PO Box 291  
GERALDTON WA 6530  
PH 9921 4661  
[www.tritonbuilding.com.au](http://www.tritonbuilding.com.au)