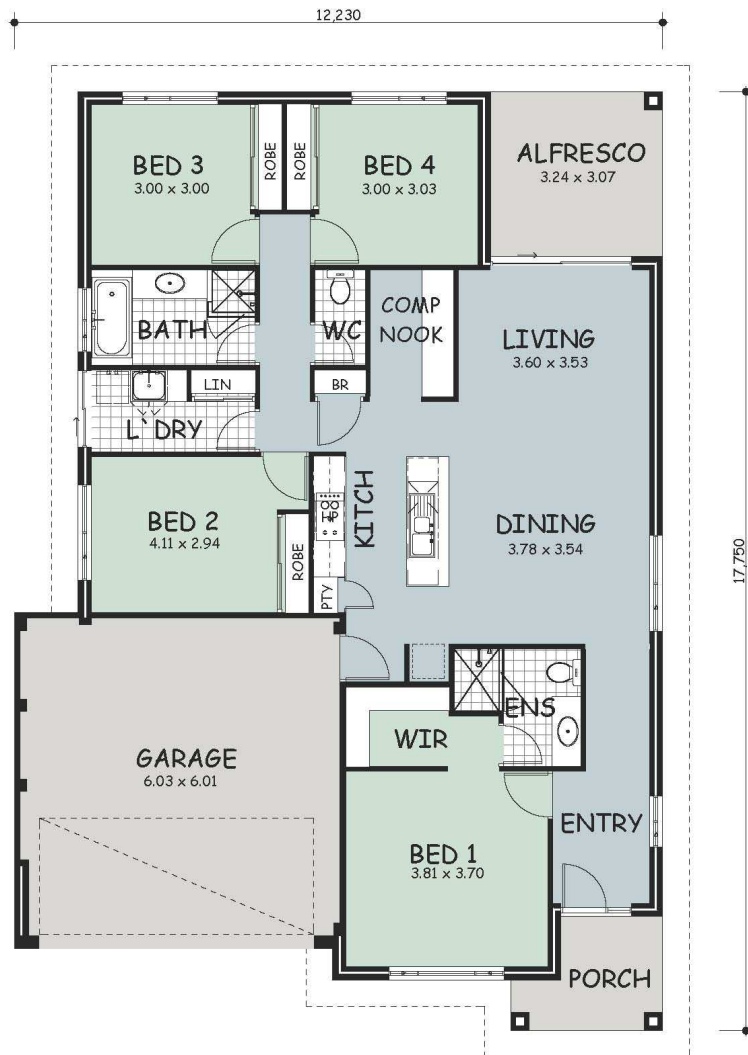


# The 'Glengarry'



Living:	139.41m <sup>2</sup>
Porch:	5.06m <sup>2</sup>
Alfresco:	10.11m <sup>2</sup>
Garage:	38.41m <sup>2</sup>
<b>Total Area:</b>	<b>192.99m<sup>2</sup></b>



PO Box 291  
 GERALDTON WA 6530  
 PH 9921 4661  
[www.tritonbuilding.com.au](http://www.tritonbuilding.com.au)